



CENTERIS 2014 - Conference on ENTERprise Information Systems / ProjMAN 2014 - International Conference on Project MANagement / HCIST 2014 - International Conference on Health and Social Care Information Systems and Technologies

Infrastructure Non-Linear Deformation Monitoring Via Satellite Radar Interferometry

Matus Bakon^{a*}, Daniele Perissin^b, Milan Lazecky^c, Juraj Papco^a

^aDepartment of Theoretical Geodesy, Slovak University of Technology, Radlinskeho 11, 813 68 Bratislava 1, Slovakia, www.insar.sk

^bSchool of Civil Engineering, Purdue University, 550 Stadium Mall Drive, West Lafayette, IN47907, Office: HAMP 4106, USA, <https://engineering.purdue.edu/~perissin/index.htm>

^cIT4Innovations, VSB-TU Ostrava VSB-Technical University of Ostrava, 17. listopadu 15, 708 33 Ostrava – Poruba, Czech Republic

Abstract

The advantages of satellite radar interferometry for displacement monitoring are demonstrated in the cases of monitoring man-made structures, i.e., buildings, bridges and dams. The application of PSInSAR methodology using ENVISAT radar images in urban area of Bratislava (Slovakia) allowed for detecting the changes over areas, that were out of interest of any regarding conventional monitoring technique. The PS derived results over structures with an existing geodetic measurements (levelling, GNSS) are compared. In other case, ascending vs. descending combination is examined. The comparison with GNSS and levelling data indicates good correlation and confirms achievable precision of InSAR measurements. As a whole, the investigated urban area of Bratislava is stable with the linear displacement trends within a ± 3 millimetres per year. However, the non-linear approach reveals small movements on the structures without the prior interest of particular monitoring technique. Thanks to technology driven progress in the development of high resolution SAR sensors (e.g. TerraSAR-X) many permanent scatterers can be found in one individual man-made construction. Moreover, with the shorter revisit times it is possible to process a long series of SAR data and expand standard PS model to account for a seasonal expansion due to changes in temperature, water levels, pressure, etc. The topic of separation between deformations and seasonal movements is discussed within the exploitation of TerraSAR-X data for deformation monitoring of Plover Cove Dam and high-rise building of Hyatt Hotel, both located in Hong Kong. Data have been processed using advanced multi-temporal processing techniques implemented in SARPROZ. These techniques show high potential for continuous monitoring of ground motion and structure stability in civil surveillance.

* Corresponding author. Tel.: +421-917-669-453; fax: +421-2-5292-5476.

E-mail address: matus.bakon@stuba.sk

© 2014 The Authors. Published by Elsevier Ltd.

Peer-review under responsibility of the Organizing Committees of CENTERIS/ProjMAN/HCIST 2014

Keywords: PSInSAR; non-linear deformation; infrastructure monitoring; seasonal component estimation; SARPROZ;

1. Introduction

The traditional way of measuring the deformation of man-made structures is using geodetic surveying techniques such as leveling or satellite navigation (GNSS). These techniques, though undeniably very accurate and reliable, are based on detecting the changes at specific points with the prior interest and investments in human resources and special equipment [1]. Due to recent developments in high resolution SAR sensors and exploitation of shorter revisit times (e.g. TerraSAR-X, COSMO-SkyMed), InSAR has a potential to outperform spatial and temporal resolution of ground-based measurements, while providing similar accuracy. As a remote sensing technique, InSAR could provide information about the urban targets without the previous interest of any conventional monitoring technique and on continuous basis. It turns out that InSAR is suitable for systematic deformation monitoring of structure stability in civil surveillance.

Presented results are based on the processing of focused SAR data using Persistent Scatterers InSAR [2,3], an advanced multi-temporal interferometry method implemented in SARPROZ [4,5,6]. To highlight the benefits of high resolution SAR sensors for the deformation monitoring purposes, two datasets have been used: ENVISAT radar images for deformation monitoring in urban area of Bratislava (Slovakia) and TerraSAR-X data for deformation monitoring and seasonal component estimation over Plover Cove Dam and Hyatt Hotel (Hong Kong).

Nomenclature

ASAR	Advanced Synthetic Aperture Radar
CSK	COSMO-SkyMed
GNSS	Global Navigation Satellite System
InSAR	Interferometric Synthetic Aperture Radar
LOS	line of sight of the satellite
PIL1, GKU4	identifier of GNSS stations
PSInSAR	Permanent Scatterers InSAR
SAR	Synthetic Aperture Radar
TSX	TerraSAR-X

2. Infrastructure Non-Linear Deformation Monitoring via Satellite Radar Interferometry

2.1 Deformation monitoring of Bratislava urban area

Bratislava, the capital city of Slovakia, is situated in its south-west on the borders with Austria and Hungary and near the border with Czech Republic. With an exclusive location and good infrastructure, the city attracts foreign investors and developers, what has resulted in unprecedented boom in construction in recent years. In the last five hundred years, the Danube River, which crosses the city caused a hundred of devastating floods. Therefore flood occurs every five years, on average. From geological point of view, the Little Carpathians horst and the area of Vienna Basin contains a number of tectonic faults, where the ground motions as a result of geodynamic processes were mostly expected [7]. It was assumed that all the phenomena stated above had an impact on the spatial composition of the Earth's surface in the urban area of Bratislava. For this research, the 57 ENVISAT ASAR images from ascending (32) and descending (25) track acquired in period of 2002 – 2010 were utilized. For the evaluation of PSInSAR potential to detect and monitor ground displacements, PS derived time series of a deformation signal were compared to the field GNSS data from two stations coded PIL1 and GKU4 (Fig. 1). The results show good

agreement with each other considering opportunistic position of PS points. As researched by the standard PSInSAR methodology with the linear model assumption, the investigated urban area of Bratislava is stable with the linear deformation rates around noise level (± 3 mm/year).

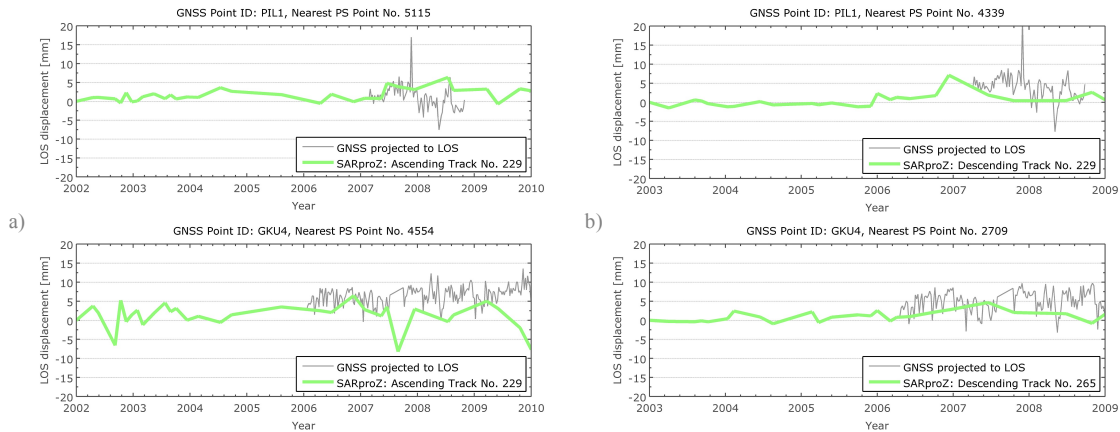


Fig. 1. Time series of GNSS deformation signal projected to the line-of sight vs. PSInSAR derived results of the nearest PS point for a) ascending track, b) descending track.

However, the adoption of non-linear deformation estimates reveals small movements on the structures without prior interest of any particular monitoring technique. When non-linear displacement movements are analysed, plotting the velocity map is useless. Cumulative displacement maps should be used instead. Here, the total amount of the millimetres that given point moved from the beginning to the end of the analysed period is mapped. The example of a non-linear movement detected by PSInSAR is shown in Fig. 2. The depicted building is situated in the city centre near the Falkensteiner Hotel. The construction works on a hotel starts in September, 2007. From the time series of both ascending and descending track, it is clear that works on a hotel affected the stability of this building by the subsidence of up to -20 mm.

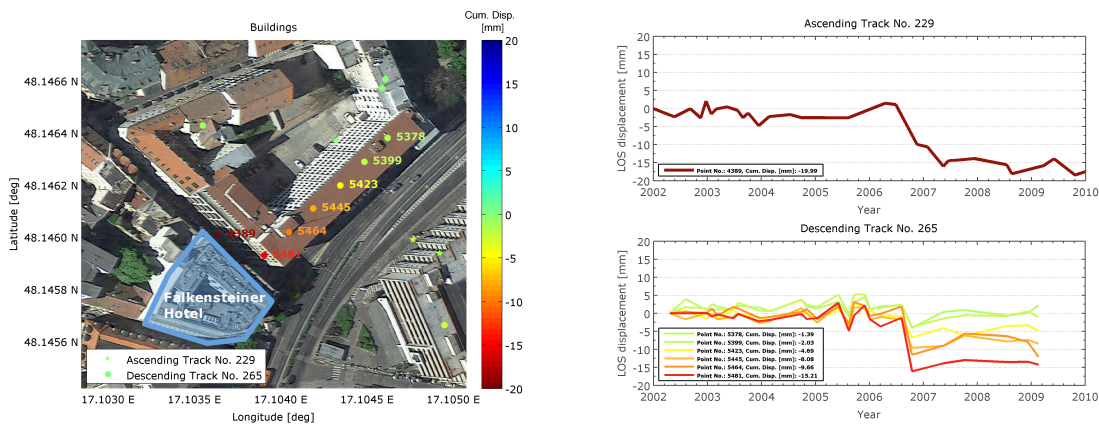


Fig. 2. Building affected by the mining of a construction pit for a nearby hotel in September, 2007.

The PS results over Gabčíkovo Dam (Fig. 3) are showing slow subsiding motion. The times series are depicted for two nearby points obtained from different tracks. Incorporated non-linear deformation estimates indicate the similar behaviour observed by the ascending vs. descending acquisition geometry.

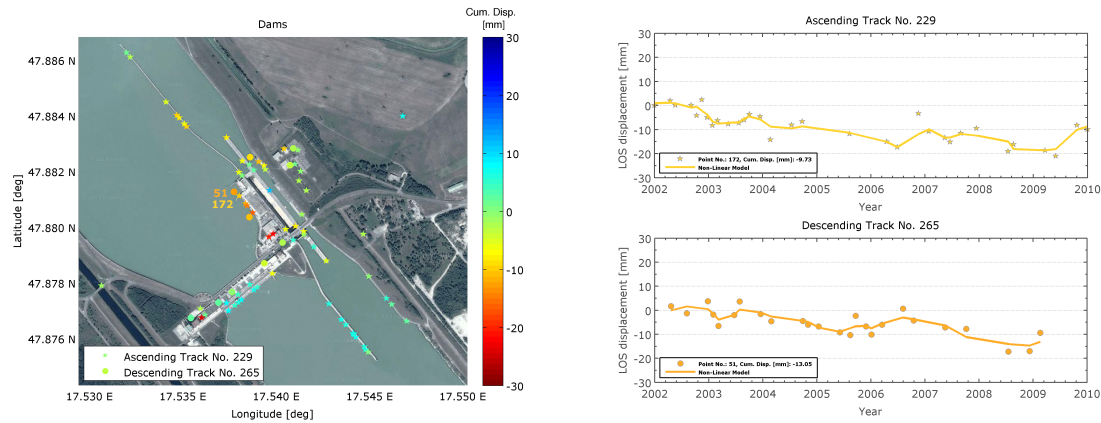


Fig. 3. Gabcikovo Dam as observed by the PSInSAR with assumption of non-linear deformation regime.

Another available ground truth data were levelling measurements over Old Bridge that was affected by the crash of Austrian tug in 2010. Changes are observable in the time series from PSInSAR that are compared to the levelling data (Fig 4.). The bridge was due to its disrepair removed in 2014.

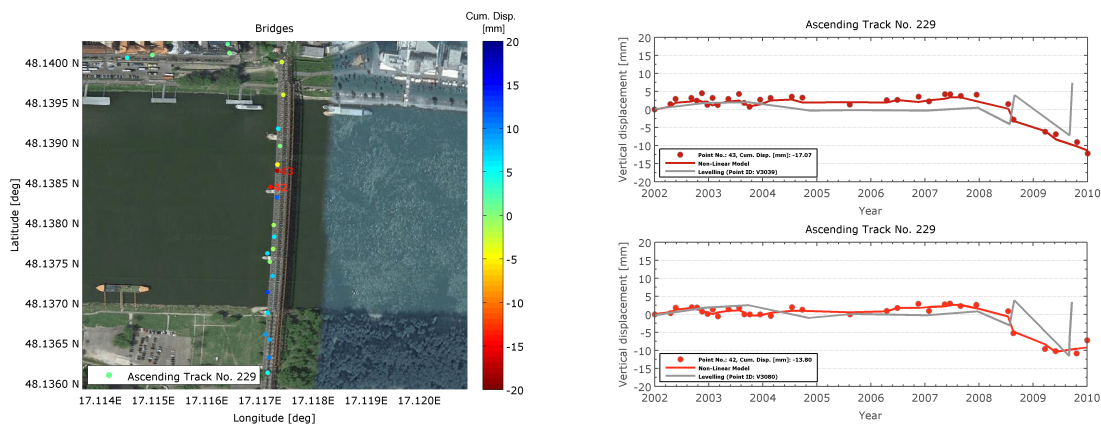


Fig. 4. Levelling vs. PSInSAR time series over bridge that was affected by the crash of a tug in 2010.

2.2 Deformation monitoring and seasonal component estimation over structures in Hong Kong

Thanks to the development of new X-Band high resolution SAR satellites, namely TerraSAR-X (TSX) launched by Germany and COSMO-SkyMed (CSK) by the Italian Space Agency, the possibilities of monitoring man-made structures of higher accuracy has become true. The new CSK and TSX sensors provide spatial resolutions in order of magnitude better than previously available satellite SAR sensors (e.g. ENVISAT). With shorter revisit times (11 days for TSX and up to 4 days for CSK), this appears to be more promising in monitoring dense linear-feature structures and rigid structures and providing more detailed ground features. For Plover Cove Dam monitoring we apply PS-InSAR technique to 73 scenes of data including 62 TerraSAR-X and 11 TanDEM-X images acquired between October 2008 and June 2012 in Hong Kong. Hundreds of permanent scatterers were successfully found and millimetric non-linear time series movements were detected on the road of the dam and embankments of the reservoir [8]. We correlated the PS-InSAR results with the water level data of the reservoir provided by Water Supplies Department (WSD) [9] of Hong Kong government. Using highly sampled dataset with external data about the water level of the reservoir it is possible to estimate its influence on the dam deformation.

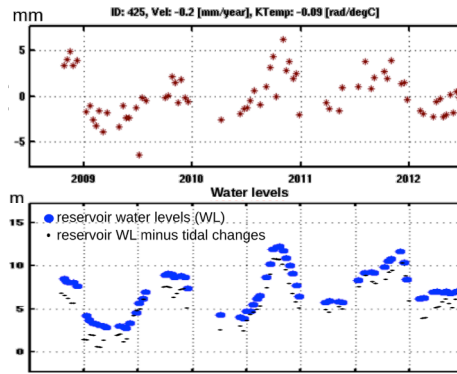


Fig. 5. Phase residuals recomputed as deformation in LOS (mm) of selected point on the dam surface (upper figure) and water level of the reservoir (m) during acquisitions (lower figure).

Water level data has been applied into the original dataset, in order to estimate this influence. Majority of PS points over the dam shows strong correlation with water levels, with a correlation coefficient of up to $k_{max} = \sim 0.65$ rad/m. According to:

$$D_{max} = k_{max} \cdot E \cdot \lambda / 4\pi \tag{1}$$

, where:

- D_{max} is the maximal deformation in LOS (mm);
- λ is the SAR carrier wavelength in (mm) (= 31.1 mm);
- k_{max} as maximal estimated coefficient of linear correlation (rad/m) or (rad/°C) ;
- and E is the range of values of investigated parameter (m) or (°C) ;

it can be computed that if difference between the minimal and maximal water level is $E = 9.8$ m, maximal deformations caused by the water level can reach $D_{max} = 16$ mm in LOS. Obviously this linear model of correlation with water level data seems simplified - a non-linear characteristics has to be searched for.

Following are the displacement analysis over the high-rise building of the Hyatt Hotel in Hong Kong (Fig. 6). The basement of the hotel structure looks stable, while the building facade is affected by the thermal expansion and by a slow constant displacement trend. Both displacement components are increasing with the building height. This is expected for what about the thermal expansion. An increasing linear displacement trend is on the contrary revealing an unexpected phenomenon. The only reasonable explanation is a horizontal movement, which corresponds to a slow tilting of the building. The top of the structure reveals 2 mm/year displacement in the satellite viewing direction, more than 3 mm/year if projected in the horizontal direction.

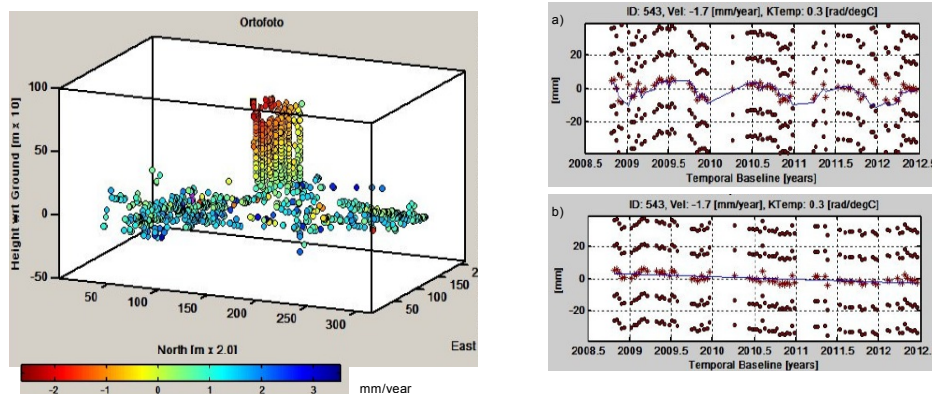


Fig. 6. Example of the displacement time series a) with the thermal expansion included b) after removal of estimated thermal expansion.

3. Conclusion

InSAR techniques can be recommended for the deformation monitoring of the man-made structures like buildings, bridges and dams. The main improvement achieved using PSInSAR technique was that uniform deformation at low rates could more accurately be assessed [10]. However, the standard PSInSAR algorithm is typically not successful in the case of higher deformation rates or non-uniform deformations [11]. In the case of information gaps for low-coherence areas or the difficulty to resolve high-phase gradients [12] a non-linear model for retrieving deformation signal has to be searched for. Thanks to the large dataset of frequently acquired high resolution SAR data (e.g. TSX, CSK), it is possible to properly discover various types of deformation movements. Due to their very high sensitivity, the influence of the various deformation sources, such as water level or temperature changes, can be precisely estimated.

Acknowledgements

ENVISAT data for this work were provided by the European Space Agency within the Category-1 project ID 9981: “Detection of ground deformation using radar interferometry techniques”. The TerraSAR-X and TanDEM-X data used in this project have been provided by Infoterra Germany, through the cooperation with Ralf Duering, Beijing. The authors are grateful to the Tatrabanka Foundation and to The National Scholarship Programme of the Slovak Republic for the opportunity of working together. Data have been processed by SARPROZ (Copyright (c) 2009 Daniele Perissin) and visualised in Matlab. This work is the result of the implementation of the project: the National Centre of Earth’s Surface Deformation Diagnostic in the area of Slovakia, ITMS 26220220108 supported by the Research and Development Operational Programme funded by the ERDF and the grant No. 1/0642/13 of Slovak Grant Agency VEGA. This paper has been elaborated in the framework of the project New creative teams in priorities of scientific research, reg. no. CZ.1.07/2.3.00/30.0055, supported by Operational Programme Education for Competitiveness and co-financed by the European Social Fund and the state budget of the Czech Republic. The work is partially supported by the European Fund for Regional Progress - FEDER (Fundo Europeu de Desenvolvimento Regional) through the project BI/COMPETE/38732/UTAD/2014 entitled “RemotWatch – Alert and Monitoring System for Physical Structures”.

References

- [1] Hanssen, R. (2001). Radar interferometry: Data interpretation and error analysis. Dordrecht: Kluwer Academic Publishers.
- [2] Ferretti, A., Prati, C., Rocca, F. (2000). Nonlinear subsidence rate estimation using permanent scatterers in differential SAR interferometry. In: IEEE Transactions on Geoscience and Remote Sensing 38.5 (2000), pp. 2202–2212.
- [3] Ferretti, A., Prati, C., and Rocca, F. (2001). Permanent scatterers in SAR interferometry. IEEE Transactions on Geoscience and Remote Sensing, 39(1):8–20.
- [4] Perissin, D. (2014). SARPROZ Software. Official Webpage: https://engineering.purdue.edu/~perissin/index_files/download.htm
- [5] Perissin D., Wang Z. & Wang T. (2011). The SARPROZ InSAR tool for urban subsidence/manmade structure stability monitoring in China. Proc. of ISRSE 2010, Sidney, Australia, 10-15 April 2011.
- [6] Perissin D. & Wang T. (2012). Repeat-Pass SAR Interferometry With Partially Coherent Targets. IEEE Trans. on Geosc. and Remote Sens. 50 (1), 271, 280.
- [7] Marko F. & Jurena V. (1999). Fault tectonics of the eastern edge of the Vienna basin and Little Carpathian Horst. Mineralia Slovaca, 31, 5–6, 513–524.
- [8] Lazický, M., Perissin, D., Scaioni, M., Lei, L., Qin Y. (2013): Plover Cove Dam Monitoring with Spaceborne InSAR Technique in Hong Kong. 2nd JISDM 2013, 9-10 Sep 2013, Nottingham, UK
- [9] Plover Cove. Water Supplies Department P.W.D., 1977
- [10] Wegmüller, U., Walter, D., Spreckels, V., and Werner, C. (2010). Nonuniform ground motion monitoring with TerraSAR-X persistent scatterer interferometry. Geoscience and Remote Sensing, IEEE Transactions, 48(2):895 – 904.
- [11] U. Wegmüller, C. Werner, T. Strozzi, and A. Wiesmann, “Application of SAR interferometric techniques for surface deformation monitoring,” in Proc. IAG—FIG Symp., Baden, Austria, May 22–24, 2006.
- [12] V. Spreckels, J. Musiedlak, U. Wegmüller, T. Strozzi, and C. Wichlacz, “Detection of underground coal mining-induced surface deformation by differential InSAR data,” in Proc. ISPRS WG I/2, I/5, IV/7 Workshop High Resolution Mapping From Space, Hannover, Germany, Sep. 19–21, 2001.